

QUICK RELEASE COUPLINGS

DN40 (1"1/2), DN50 (2"), DN80 (3") and DN100 (4") - PPGF



Quick Release Coupling DN80



Quick Release Coupling DN50

MAIN FEATURES

- Simple and Robust couplings for a fast connection/disconnection.
- Fittings in PPGF for an optimal mechanical and chemical resistance.

Les descriptions et caractéristiques figurant sur ce document sont données uniquement à titre d'information et non d'engagement contractuel. SAFI se réserve le droit d'effectuer sans préavis, toute modification.

SAFI has a policy of continuously developing its product range and the above data is subject to change without prior notification.

Die Beschreibungen und Daten, die sich auf diesem Dokument befinden, sind rein informativ und unverbindlich. SAFI behält sich vor, ohne Vorankündigung Änderungen vorzunehmen, die als technisch notwendig erachtet werden.

Las descripciones y características que figuran en este documento son indicativas. En ningún caso son contractuales. SAFI se reserva el derecho sin previo aviso de efectuar cualquier modificación.

SAFI

Av. Jacques Moison – BP 1
26770 TAULIGNAN
FRANCE
Tél.: (+33) 4 75 53 56 29
Fax : (+33) 4 75 53 62 78
info@safi-valves.com

SAFI Limited

35 Holton Road
Holton Heath Trading Park
POOLE Dorset - BH16 6LT
UNITED KINGDOM
Tél.: (+44) 1202 624618
Fax : (+44) 1202 628500
sales@safi-valves.com

SAFI Deutschland

Kunststoffarmaturen
Vertriebs GmbH
Jahnstrasse 29
64319 PFUNGSTADT
DEUTSCHLAND
Tél. : (+49) 61 57 81 919
Fax : (+49) 61 57 82 025
info-deutschland@safi-valves.com

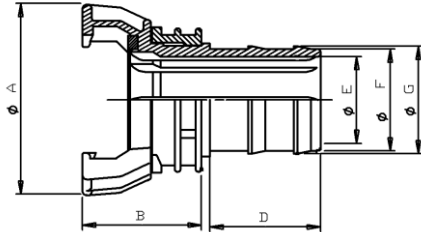
SAFI Fabrica de Valvulas

C/ Carboners, 35
Pol. Ind. La Cometa
43700 EL VENDRELL
TARRAGONA-ESPAÑA
Tél.: (+34) 977 665 147
Fax : (+34) 977 664 989
info@safi-valvulas.com

SAFI America

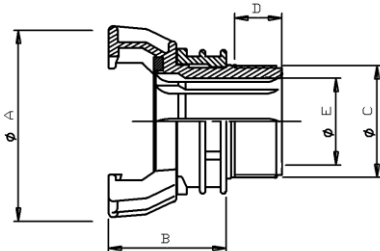
Las Garzas Trade Center
Las Garzas #950, B
Quilicura
SANTIAGO – CHILE
Tél.: (+56 2) 2 510 3500
Fax : (+56 2) 2 510 3507
info@safi-america.com

Quick release coupling, with lock and hosetail outlet



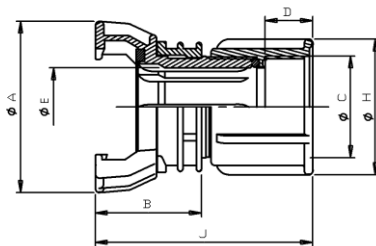
| DN | A | B | D | E | F | G | Product Code | |
|-----|-----|----|----|----|-----|-----|--------------|-----------|
| | | | | | | | EPDM | FPM |
| 40 | 85 | 55 | 59 | 36 | 43 | 46 | 2004-03BE | 2004-03BV |
| 50 | 105 | 63 | 59 | 43 | 51 | 52 | 2004-03JE | 2004-03JV |
| 50 | 105 | 63 | 59 | 46 | 54 | 55 | 2004-03DE | 2004-03DV |
| 80 | 150 | 77 | 75 | 80 | 88 | 90 | 2004-03FE | 2004-03FV |
| 100 | 178 | 92 | 83 | 95 | 109 | 112 | 2004-03HE | 2004-03HV |

Quick release coupling, with lock and BSP threaded spigot outlet



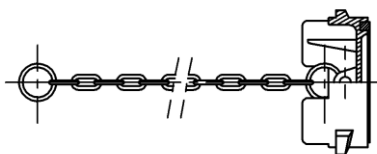
| DN | A | B | C | D | E | Product Code | |
|-----|-----|----|-------|----|----|--------------|-----------|
| | | | | | | EPDM | FPM |
| 40 | 85 | 45 | 1"1/4 | 21 | 36 | 2004-04KE | 2004-04KV |
| 40 | 85 | 70 | 1"1/2 | 20 | 36 | 2004-04BE | 2004-04BV |
| 50 | 105 | 63 | 2" | 25 | 46 | 2004-04EE | 2004-04EV |
| 80 | 150 | 77 | 3" | 32 | 80 | 2004-04GE | 2004-04GV |
| 100 | 178 | 92 | 4" | 36 | 95 | 2004-04JE | 2004-04JV |

Quick release coupling, with lock and BSP threaded socket outlet



| DN | A | B | C | D | E | H | J | Product Code | |
|-----|-----|----|-------|----|----|-----|-----|--------------|-----------|
| | | | | | | | | EPDM | FPM |
| 40 | 85 | 55 | 1"1/2 | 23 | 36 | 66 | 110 | 2004-05BE | 2004-05BV |
| 50 | 105 | 63 | 2" | 25 | 46 | 78 | 127 | 2004-05DE | 2004-05DV |
| 80 | 150 | 77 | 3" | 25 | 80 | 108 | 153 | 2004-05FE | 2004-05FV |
| 100 | 178 | 92 | 4" | 36 | 95 | 140 | 184 | 2004-05HE | 2004-05HV |

Blanking plug with a 30 cm chain



| DN | Product Code | |
|-----|--------------|-----------|
| | EPDM | FPM |
| 40 | 2004-07BE | 2004-07BV |
| 50 | 2004-07DE | 2004-07DV |
| 80 | 2004-07FE | 2004-07FV |
| 100 | 2004-07HE | 2004-07HV |

Tightening torque for the Quick release couplings

| DN | Tightening Torque (screwing) max |
|-----|----------------------------------|
| 40 | 22 N.m |
| 50 | 35 N.m |
| 80 | 45 N.m |
| 100 | 65 N.m |

Replacement Seals

| DN | EPDM Seal | FPM Seal |
|-----|-----------|----------|
| 40 | 2004-11A | 2004-12A |
| 50 | 2004-11B | 2004-12B |
| 80 | 2004-11C | 2004-12C |
| 100 | 2004-11D | 2004-12D |

The mechanical characteristics of the FPM and FFPM seals subjected to an ambient temperature below -5°C require the implementation of proper insulation on the valves equipped with such seals. Contact us for more information.

Spanner Wrench

| DN | PRODUCT CODE |
|-----|--------------|
| 40 | 2004-13A |
| 50 | |
| 80 | 2004-13B |
| 100 | |



The Spanner Wrench allows an easy and secure fitting of the quick release couplings without any risk of damage during installation.