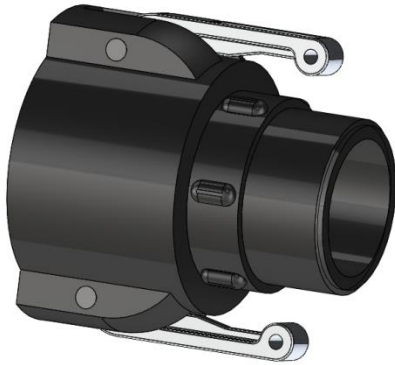


## CAMLOCK COUPLINGS

### DN15 (1/2") to DN50 (2") + DN80 (3") - PPGF



*BSP male threaded Coupling  
Type BF - DN40*



*BSP male threaded adaptor - DN50*

## MAIN FEATURES

- Simple and Robust couplings for a fast connection/disconnection.
- Adaptors, Couplings and Blanking plugs conform to the EN14420-7:2003 standard.
- Items in PPGF for an optimal mechanical and chemical resistance.

Les descriptions et caractéristiques figurant sur ce document sont données uniquement à titre d'information et non d'engagement contractuel. SAFI se réserve le droit d'effectuer sans préavis, toute modification.

SAFI has a policy of continuously developing its product range and the above data is subject to change without prior notification.

Die Beschreibungen und Daten, die sich auf diesem Dokument befinden, sind rein informativ und unverbindlich. SAFI behält sich vor, ohne Vorankündigung Änderungen vorzunehmen, die als technisch notwendig erachtet werden.

Las descripciones y características que figuran en este documento son indicativas. En ningún caso son contractuales. SAFI se reserva el derecho sin previo aviso de efectuar cualquier modificación.

#### SAFI

Av. Jacques Moison – BP 1  
26770 TAULIGNAN  
FRANCE  
Tél.: (+33) 4 75 53 56 29  
Fax : (+33) 4 75 53 62 78  
info@safi-valves.com

#### SAFI Limited

35 Holton Road  
Holton Heath Trading Park  
POOLE Dorset - BH16 6LT  
UNITED KINGDOM  
Tél.: (+44) 1202 624618  
Fax : (+44) 1202 628500  
sales@safi-valves.com

#### SAFI Deutschland

Kunststoffarmaturen  
Vertriebs GmbH  
Jahnstrasse 29  
64319 PFUNGSTADT  
DEUTSCHLAND  
Tél. : (+49) 61 57 81 919  
Fax : (+49) 61 57 82 025  
info-deutschland@safi-valves.com

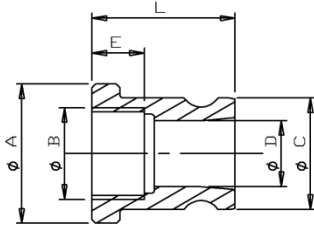
#### SAFI Fabrica de Valvulas

C/ Carboners, 35  
Pol. Ind. La Cometa  
43700 EL VENDRELL  
TARRAGONA-ESPAÑA  
Tél.: (+34) 977 665 147  
Fax : (+34) 977 664 989  
info@safi-valvulas.com

#### SAFI America

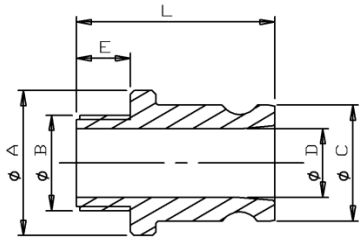
Las Garzas Trade Center  
Las Garzas #950, B  
Quilicura  
SANTIAGO – CHILE  
Tél.: (+56 2) 2 510 3500  
Fax : (+56 2) 2 510 3507  
info@safi-america.com

## Female BSP threaded adaptor – AF Type



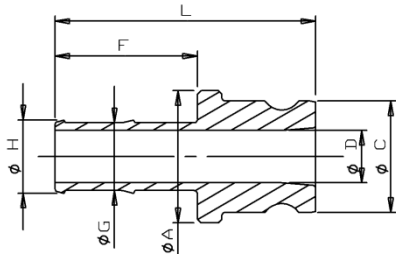
DN	ØA	ØB	ØC	ØD	E	L	PRODUCT CODE
15	40	1/2"	32	16	19	50	2009-00A
20	40	3/4"	32	19	21	50	2009-01A
25	50	1"	37	22	20	57	2009-02A
32	54	1"1/4	37	24	22	60	2009-03A
40	65	1"1/2	54	36	22	65	2009-04A
50	75	2"	63	45	25	78	2009-05A
80	111	3"	92	73	32	89	2009-06A

## Male BSP threaded adaptor – FF Type



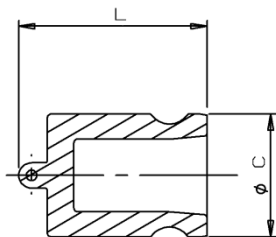
DN	ØA	ØB	ØC	ØD	E	L	PRODUCT CODE
15	40	1/2"	32	16	19	62	2009-00F
20	40	3/4"	32	18	23	62	2009-01F
25	50	1"	37	22	25	72	2009-02F
32	49	1"1/4	37	22	27	82	2009-03F
40	59	1"1/2	54	36	24	82	2009-04F
50	68	2"	63	45	28	88	2009-05F
80	111	3"	92	72	38	108	2009-06F

## Hosetail adaptor – EC Type



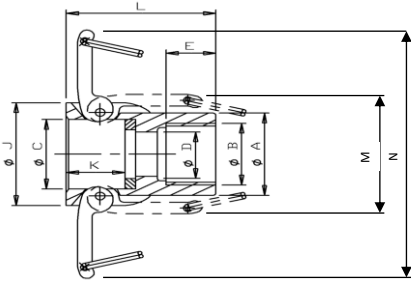
DN	ØA	ØC	ØD	F	ØG	ØH	L	PRODUCT CODE
15	41	32	15	25	12	14	59	2009-00E
20	40	32	19	41	19	21	80	2009-01E
25	46	37	21	55	25	27	99	2009-02E
32	49	37	22	54	31	33	103	2009-03E
40	63	54	36	60	38	40	112	2009-04E
50	73	63	45	70	50	52	128	2009-05E
80	107	92	71	101	75	79	174	2009-06E

## Male dust cap – DP Type



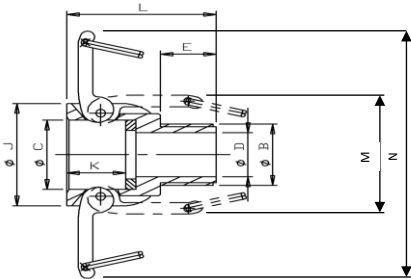
DN	ØC	L	PRODUCT CODE
15	32	49	2009-00G
20	32	49	2009-01G
25	37	45	2009-02G
32	37	45	2009-03G
40	54	48	2009-04G
50	63	62	2009-05G
80	92	75	2009-06G

## Female BSP threaded coupling – DF Type



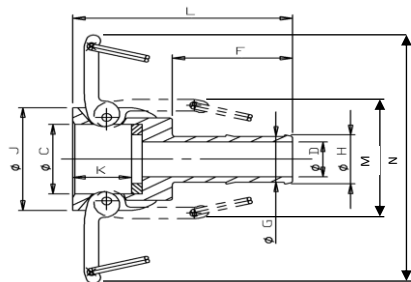
DN	ØA	ØB	ØC	ØD	E	ØJ	K	L	M	N	PRODUCT CODE
15	40	1/2"	33	14	18	42	24	48	54	98	2009-00DE
20	40	3/4"	33	19	21	55	24	55	64	98	2009-01DE
25	50	1"	37	25	20	64	29	60	61	124	2009-02DE
32	56	1"1/4	37	24	23	64	34	68,5	66	124	2009-03DE
40	65	1"1/2	54	38	21	89	34	69	90	189	2009-04DE
50	76	2"	64	48	26	94	43	80	101	199	2009-05DE
80	110	3"	92	78	33	134	47	91	135	253	2009-06DE

## Male BSP threaded coupling – BF Type



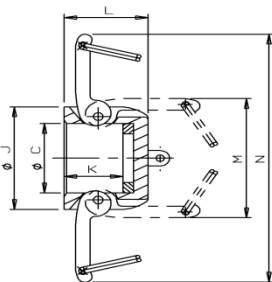
DN	ØB	ØC	ØD	E	ØJ	K	L	M	N	PRODUCT CODE
15	1/2"	33	13	16	54	24	52	53	110	2009-00BE
20	3/4"	33	13	16	54	24	52	64	98	2009-01BE
25	1"	37	23	25	63	29	65	61	124	2009-02BE
32	1"1/4	37	31	27	65	34	79	61	125	2009-03BE
40	1"1/2	54	39	24	89	34	71	90	190	2009-04BE
50	2"	64	49	28	94	43	81	101	198	2009-05BE
80	3"	92	71	32	133	47	98	134	254	2009-06BE

## Hosetail coupling – CC Type



DN	ØC	ØD	F	ØG	ØH	ØJ	K	L	M	N	PRODUCT CODE
15	33	8	38	13	15	55	24	72	64	98	2009-00CE
20	33	13	42	19	21	55	24	75	64	98	2009-01CE
25	37	20	55	25	27	63	29	95	61	125	2009-02CE
32	37	25	54	32	33	65	34	101	61	125	2009-03CE
40	54	28	60	38	40	88	34	106	90	189	2009-04CE
50	64	42	70	50	52	93	43	123	100	199	2009-05CE
80	92	61	101	75	80	134	47	161	134	255	2009-06CE

## Female dust cap – DC Type



DN	ØC	ØJ	K	L	M	N	PRODUCT CODE
15	33	54	24	42	53	110	2009-00HE
20	33	54	24	42	53	110	2009-01HE
25	37	63	29	51	61	124	2009-02HE
32	37	63	34	51	61	124	2009-03HE
40	54	89	34	60	90	190	2009-04HE
50	64	94	43	66	102	199	2009-05HE
80	92	133	47	73	135	255	2009-06HE

Les descriptions et caractéristiques figurant sur ce document sont données uniquement à titre d'information et non d'engagement contractuel. SAFI se réserve le droit d'effectuer sans préavis, toute modification.

SAFI has a policy of continuously developing its product range and the above data is subject to change without prior notification.

Die Beschreibungen und Daten, die sich auf diesem Dokument befinden, sind rein informativ und unverbindlich. SAFI behält sich vor, ohne Vorankündigung Änderungen vorzunehmen, die als technisch notwendig erachtet werden.

Las descripciones y características que figuran en este documento son indicativas. En ningún caso son contractuales. SAFI se reserva el derecho sin previo aviso de efectuar cualquier modificación.